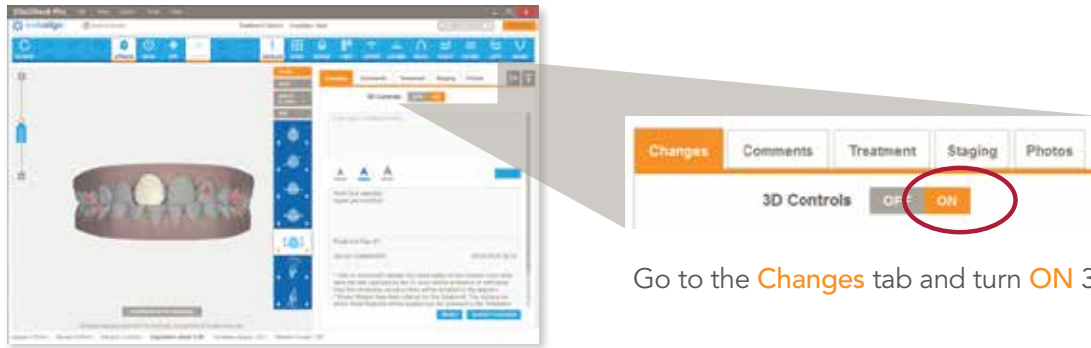


# ClinCheck Pro with 3D Controls

MORE PRECISE CONTROL TO HELP YOU ACHIEVE YOUR TREATMENT GOALS

Quick Reference Guide

To get started, turn on the 3D Controls toolbar:

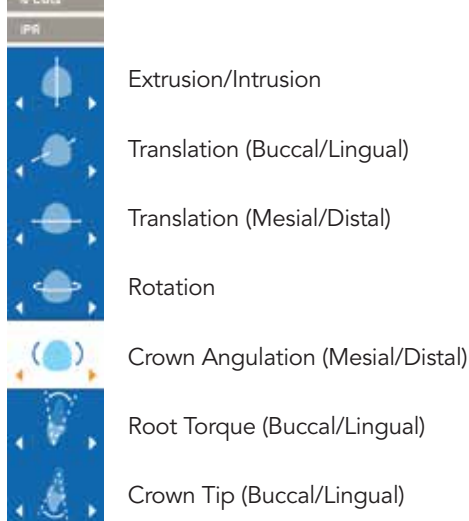


Go to the **Changes** tab and turn **ON** 3D Controls.

The 3D Controls toolbar includes four tools that allow you to make changes to the final tooth position on the 3D model.

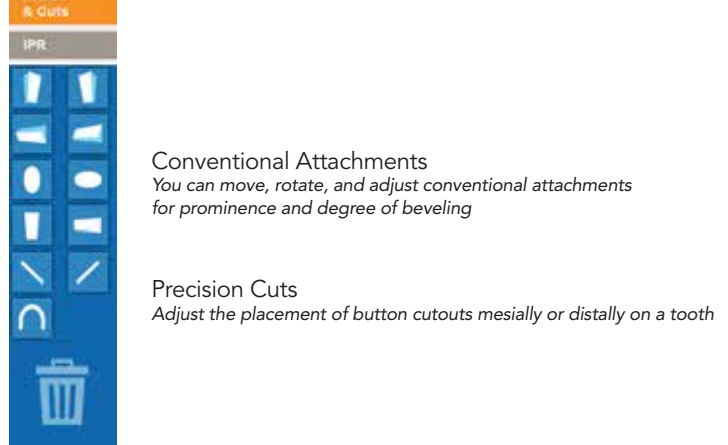
## TOOTH POSITION MODIFICATIONS

Make adjustments to the final position of individual teeth, including:



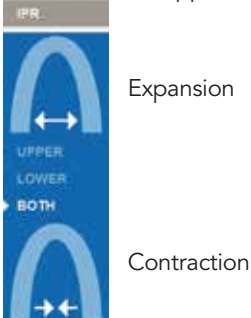
## ATTACHMENTS & PRECISION CUTS

Drag & drop conventional attachments and Precision Cuts on the 3D model



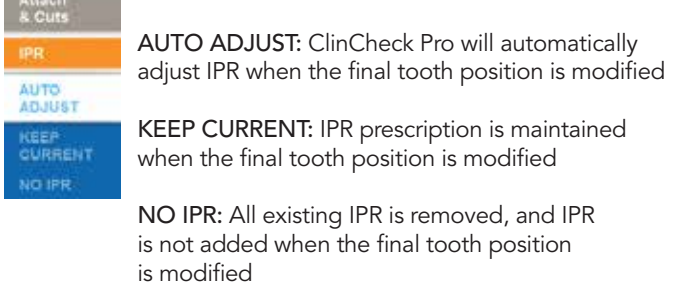
## POSTERIOR ARCH EXPANSION & CONTRACTION

Posterior expansion or contraction for upper and/or lower arches



## IPR & SPACE MANAGEMENT

IPR: Manage interproximal reduction and spacing for specific contacts







### 3D TOOTH MOVEMENT ASSESSMENT

An optional 3D visualization of the tooth movement assessment is available. While adjusting a tooth, you can see the assessment of difficulty for that movement.

**Note:** The color categories for assessing the difficulty of a treatment are provided for the doctor's reference only, and do not restrict your ability to request modifications to the treatment plan.



### TOOTH ID IN COMMENTS

Tooth ID can be automatically copied to the Comments text box by Alt-Clicking on the tooth.



### EXPORT MOVIES

Exported movies can be personalized with your practice and/or patient information.



### SWITCH LANGUAGES

Easily switch between languages by selecting the [Change Language](#) menu option under the Help menu. Note that change will only be effective in the ClinCheck software.



### UNDO

If you don't like an adjustment you've made, simply select [Undo](#) to remove it. You can continue to go backwards on changes made.



### RESET

Changes can be reset at any time. There are three options to reset changes:

- 1) Attachments modifications
- 2) Precision Cuts modifications
- 3) Final position modifications (teeth positions, arches form, IPRs)

If you check all three options, your treatment plan will be reset to the original treatment plan from Align Technology.



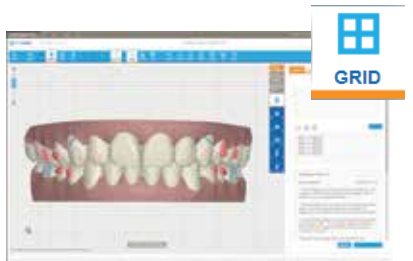
## DUAL VIEW

Any modifications made using 3D Controls may be compared side-by-side with the original set up from Align Technology or initial malocclusion. Hover over the [Compare with Original](#) button, or click the button to enter Dual View mode to compare set ups, and toggle between them. 3D modifications may also be made when in Dual View mode.



## OCCLUSAL CONTACTS

Visually identify all inter-arch occlusal contacts on the 3D model. Normal inter-arch occlusal contacts are represented in green; heavy occlusal contacts are red. ClinCheck Pro software can automatically resolve heavy contacts or you can do this manually by adjusting the teeth. Alternately, you may leave heavy occlusal contacts for the technician to resolve for you.



## GRID

The improved [GRID](#) button displays a grid that can be used to measure linear tooth movements. You can position the 3D model to measure what you need.



## SUPERIMPOSITION

The [SUPER](#) button lets you to superimpose tooth position at any stage in relation to the tooth position at any other stage. Now with improved superimposition, you can view superimposition between any two stages and control which stage is blue and which stage is white for a better visualization between stages.

## OFFLINE MODIFICATIONS

The primary way to gain access to ClinCheck treatment plans is online, on the Invisalign Doctor Site, but you can also work offline (i.e., without an internet connection) with the Invisalign Patients Viewer. Changes made offline will be synchronized the next time you go online.

**Note:** When you work offline, you will not be able to submit changes or approve a ClinCheck treatment plan until you're back online.

## SUBMITTING MODIFICATIONS

You have the option to continue to revise treatment plans by providing text comments as you do today, or combine 3D adjustments with text comments to your technicians for maximum flexibility.

Once you submit changes to Align Technology, the ClinCheck treatment plan will be updated to reflect your instructions. You will have additional opportunity for input before ClinCheck treatment plan approval and aligner production begins.